

cominfo[®]

PORTABLE ACCESS CONTROL

Integrated solution - mobility / site security / access and vehicle control system



PORTACC as an integrated solution for the site security and portable access control system.

This special designed system connects advantages of mobility (portable container unit), security (turnstile: half-height or full-height) and electronic access control (RFID reader/Bar Code scanner).

Guard House completes whole system to manage data processing from access control system or area monitoring by CCTVs. **Car gate system** supplements control system to supervise all vehicle movement in secured site.

Turnstile for high traffic environment provides permitted passages only. No passage without necessary ID card (BarCode ticket, RFID tag) can be realized.

All these tasks can be provided from one place by using PORTACC.

Solution for extreme situations

Anti-vandal construction together with weather-resistance treatment enables to use PORTACC in the extreme and high-traffic environments as building industry, oil and mine industry or concerts and festivals.

The power supply back-up keeps this system functional in case of power failure or other unexpected events too.

Module unit variability

The modularity of PORTACC integrated system ensures tailor solution for any projects, requirements and customization. This module system enables to meet all the project requirements and offers wide range of PORTACC models (as ONE-turnstile module, 20 feet and 40 feet modules and many others). All the modules can be completed by Guard House or Car Gate system.

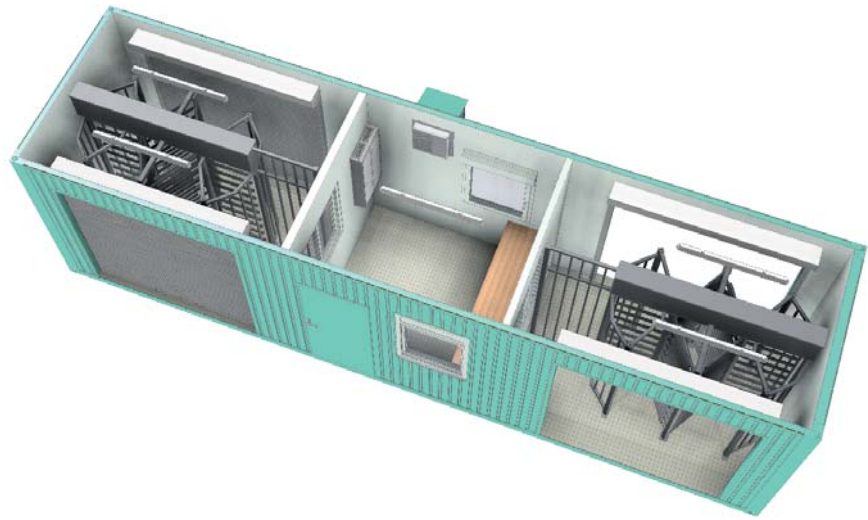
Module design

The PORTACC system applies nice interior look in tough steel container construction with module variability in the meaning of module dimensions. All the turnstile connections with its cabling are hidden behind the wall and not accessible for any trespasser.

Application environment

- building industry
- power stations
- refineries
- ports, dockyard
- large outdoor public events
- military installations
- mass transit systems





Po

PORTACC module specification

General specification of PORTACC modules

Co

Container unit variability

Description of PORTACC module variability

GU

Guard House

Control room with Security Guard equipment

CA

Car Gate system

Car gate with barrier beam length up to 6m

TU

Turnstile type

BAR BA: half-height tripod turnstile
REXON ERA3 / ERA 3 DUO: full-height turnstile

SP

Specification overview

Standard specification and optional accessories

LA

Layout drawings

Drawings with general module dimensions

PORTACC design and construction is pointed to nice and blank look but fully functional and extreme conditions resistance.

Container unit construction

The container unit represents Free-standing steel construction with steel sheeting finished by customized RAL color. Container unit is thermally and vapor insulated.

For handling by crane the 8 ISO container corners are implemented in container construction.

Fork-lift pockets for easy transport by forklift or exterior lightning can be optionally added.

Interior

Interior walls of Turnstile room are made of white colored steel plate with water-proof treatment for easy cleaning and nice representative look together. Non-slip material (riffled alu-sheet) as flooring was chosen as standard.

Interior sections are fully illuminated by high-performance fluorescent lamps.

Pass Lane

Standard pass entrance door is naked without roller gate. Flooring is made of non-slip riffled Aluminium sheet.

Optionally equipment as mechanical/electrical roller gate or Entry hinged platform is available.

Guard House

Thermally and vapor insulated Guard House with interior window enables full control of passes through turnstiles. Security entry door increases security level of PORTACC module.

Guard House can be additionally equipped by office furniture, Air Conditioner with heating convertor, PC, CCTV, exterior window with roller shutter and many others.

Turnstile types

For different security level requirements the PORTACC system offers two turnstile types to choose. Vandal resistance stainless steel construction of both turnstile types is natural.

The Half-height tripod **BAR BA** turnstile as low security level is suitable for concerts or festivals.

Otherwise Full-height **REXON ERA 3 / ERA 3 DUO** turnstile with tough construction is optimal to use in extreme conditions as industry environments.

Many additional options for both turnstile types are available (e.g. remote control, power supply back-up, traffic light...).

Car Gate system

Car Gate barrier can be optionally implemented to container construction. This system ensures car traffic control in the same place within person access control.

Removable barrier beam enables easy transport of PORTACC unit with implemented Car Gate system. Many additional features as beam skirt or lightning kit, power supply back-up and others are available.

The container module length extension is 500 mm in case of Car Gate system implementation.

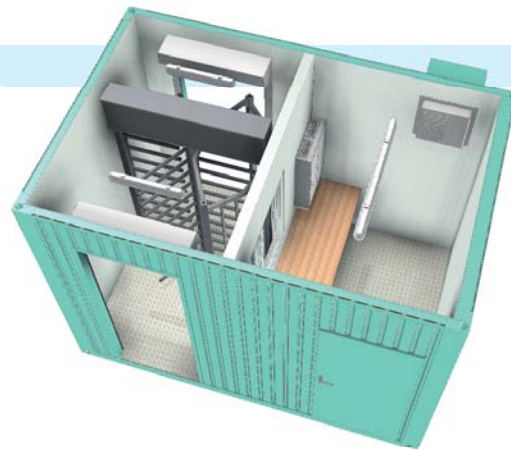
The PORTACC system represents connection of good looking interior with resistant and tough module construction together. It means it is possible to adapt container module dimensions to customer's requirement or implement Guard House and Car Gate system too.

Finally customer can select turnstile type according to the project focusing (BAR BA, REXON ERA3, REXON ERA 3 DUO). Additionally it is possible to design the tailor module solution beside the general PORTACC models. The PORTACC module variability is really very large.

General PORTACC models:

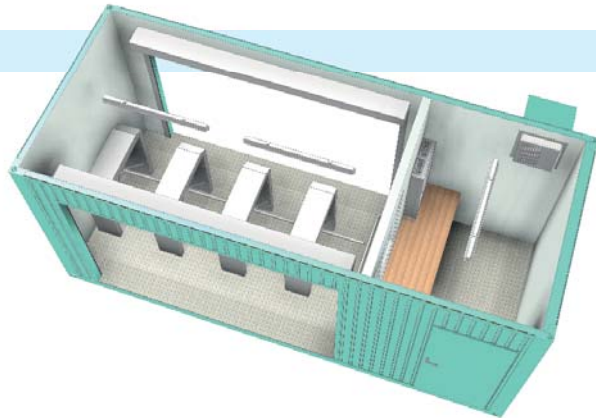
One turnstile modules:

- 1x REXON turnstile
- 1x REXON turnstile + Guard House
- 1x BAR turnstile
- 1x BAR turnstile + Guard House



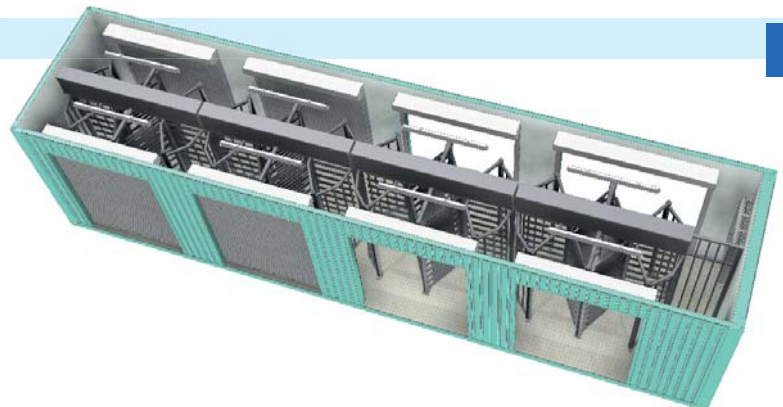
20fts. modules:

- 4x REXON turnstile
- 3x REXON turnstile + Guard House
- 6x BAR turnstile
- 4x BAR turnstile + Guard House



40fts. modules:

- 4x REXON ERA DUO turnstile
- 6x REXON turnstile + Guard House
- 12x BAR turnstile
- 8x BAR turnstile + Guard House



The PORTACC system uses tailored modules for each projects and it can be supplied in wide module ranging from 2 metres to 12 metres.

The container module length is extended for 500 mm in case of Car Gate system implementation.
For 20fts./40fts. modules - the module length is not strictly 20fts. / 40fts.

GUARD HOUSE

Additional Guard House for PORTACC unit is not-separable part of container and can be placed at the edge or in the middle part of container unit.

It is a thermally and vapor insulated control room for Security Guards employees.

Window view with slide opening to the turnstile part of container unit ensures passage monitoring by Security Guards and steel Security door increase security level of PORTACC system.

This Guard House can be additionally equipped by office chair and desk, Air Conditioner with heating convertor or PC with LAN interface and CCTV. Window can be equipped by roller shutter.

For turnstile remote control the additional Touch Panel or TMON software application can be added. The remote control commands as single /permanent / free pass and emergency mode settings are natural.

CAR GATE SYSTEM

The container module length extension is 500 mm in case of Car Gate system implementation

Platform with a car gate can be implemented in container construction. This platform is not demountable so it can be transported together with container unit without difficult and time-wasting procedures.

Car Gate system is also equipped by removable gate barrier with length up to 6 meters.

It is recommended to choose Guard House together with Car Gate system. In this case Guard house has to be placed at the edge of container unit (not in the middle of the container).

Thanks to the barrier length up to 6m the Car Gate can be used for heavy trucks and lorries as bi-directional control system.

Two way of Car Gate control can be used - push button placed in Guard House or remote control is possible.

Other optional accessories as barrier lightning, barrier skirt kit, back-up accumulator system in case of power failure or special small gate in container construction for easy barrier beam transport is certain.

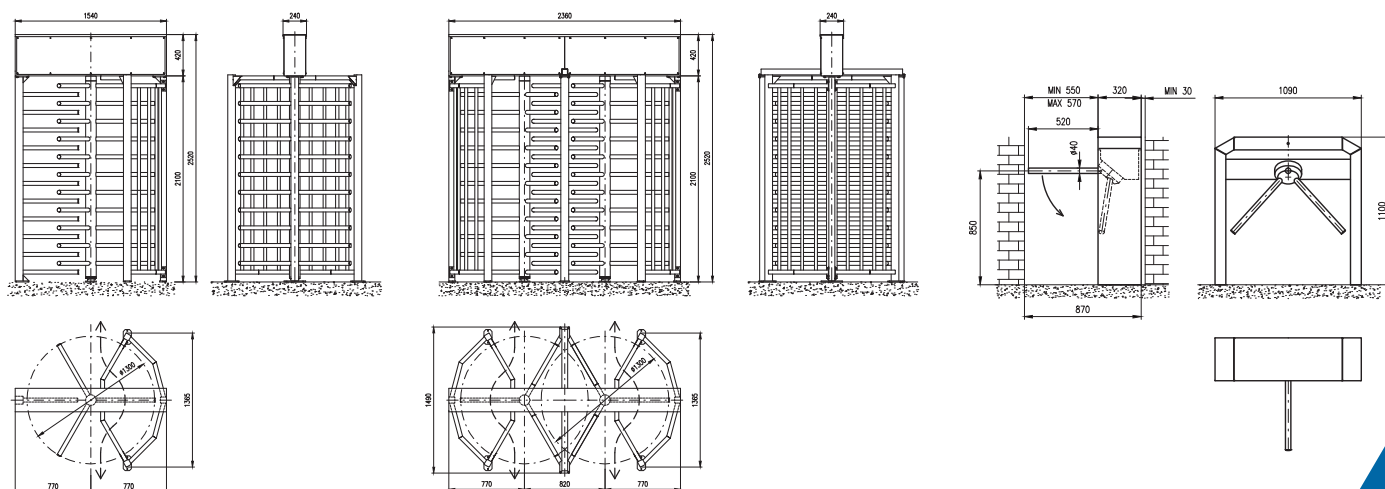


For more information of Guard House and Car Gate system see Specification overview or contact Cominfo Inc.



		REXON ERA 3 / ERA 3 DUO	BAR BA
Type of construction		full-height turnstile / duo version available	half-height tripod turnstile
Dimensions (mm)	turnstile height	2 520 mm	1 100 mm
	turnstile length	1 365 mm	1 090 mm
	turnstile width	1 540 mm (ERA 3) / 2 360 mm (ERA 3 DUO)	870 mm
	barrier type	3 wings with straight bar arms	tripod with straight bar arms
	passage sector	120° sector	sector divided by horizontal arm
Suitable as a wheelchair pass		no	no
Material	construction	Steel construction, zinc treated / RAL finished top panel	brushed stainless steel
Power supply (fail-lock motor drive unit) - with heating module - without additional accessories		13,8V DC / 3,5 A (ERA 3) 13,8V DC / 7,0 A (ERA 3 DUO)	13,8V DC / 4,8 A
Power supply backup		yes*	yes*
Emergency mode (in case of emergency)		Emergency button by Touch Panel* or TMON application*	Emergency button by Touch Panel* or TMON application* emergency drop arm*
Other standard features		Extra locking mechanism, outdoor package	Outdoor package
Climbing over detection		not required (no space between turnstile and inner roof)	Climbing over / Crawling under detection*
Options			
Proximity card reader / Data terminal		yes* (special bracket required)	yes* (for Data terminal special bracket required)
Traffic Light		yes*	yes* (special bracket required)
Remote control		yes* (Touch Panel or Software application to control via PC)	yes* (Touch Panel or Software application to control via PC)

For more additional options see Specification overview



* offered as optional (for more details see Specification overview or contact Cominfo Inc.)

SPECIFICATION OVERVIEW - Standard specification

Container module unit - construction

Material	Steel frame, steel sheeting (zinc coated), RAL color finished, cementchip floor board
Handling	8 ISO corners for crane hook (40fts. container equipped extra more) by eye for crane hook
Other features	Roof drainage, standard insulation and vapor-blocking

Container module unit - interior (including Guard House)

Material	Interior walls made of white colored steel plate with water-proof treatment Flooring material - 3mm riffled alu-sheet, non-slip
Other Features	Ventilation with insect mesh, illumination of all interior sections (including Guard House)

Pass lane

Material	Flooring material - 3mm riffled alu-sheet, non-slip
Other features	Standard naked entrance door without roller gate

Guard House

Insulation	Thermally and vapor insulated control room Equipped by convector heater
Other features	Wall socket (socket type according to target state) + LAN interface Security entry door (in RAL color of container construction)

Turnstile (for high-traffic environment)

BAR BA turnstile

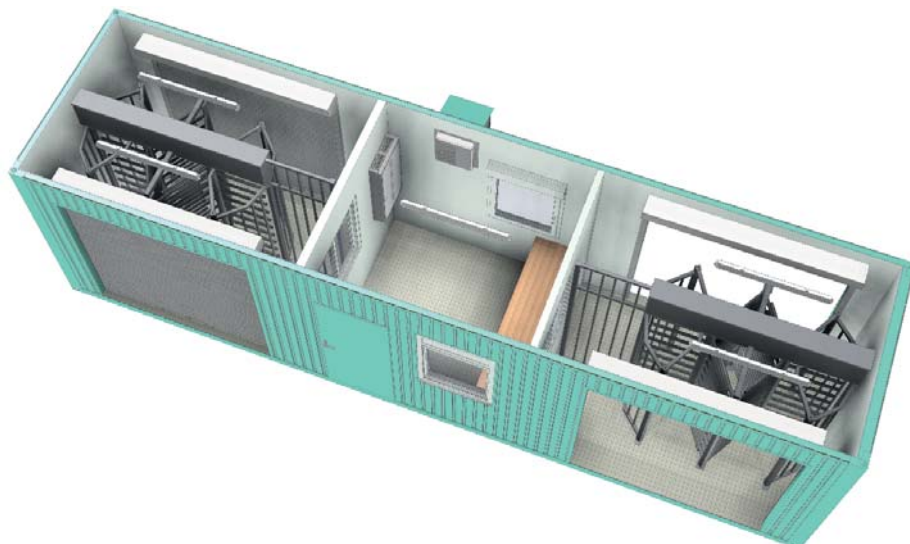
Turnstile type	Half height tripod turnstile with FAIL-LOCK motor drive unit
Material	Stainless steel construction
Other features	Outdoor package (heating system with thermometer for motor drive unit)

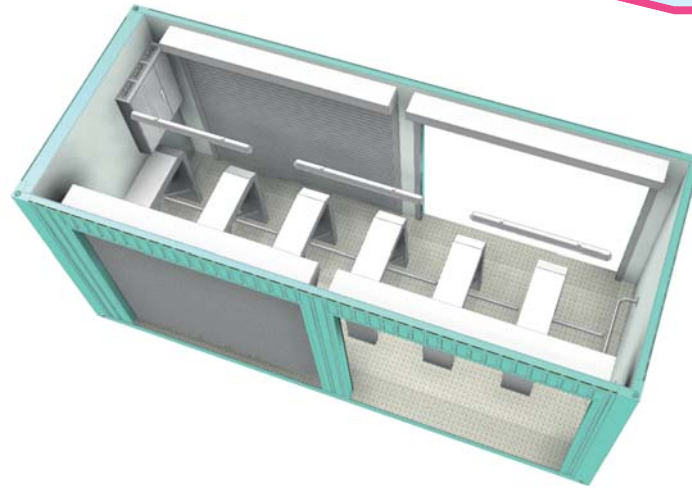
REXON ERA3 / ERA 3 DUO turnstile

Turnstile type	Three wings version (single/duo) of full height turnstile with FAIL-LOCK motor drive unit equipped by extra electromagnetic brake
Material	Zinc treated construction with RAL color finish
Other features	Outdoor package (heating system with thermometer for motor drive unit)

Car Gate system (the container module length extension is 500 mm)

Platform	Platform is part of container unit construction = platform is not removable
Barrier beam	Removable barrier beam with length up to 6 meters





Container module unit

Surface finish

RAL color various (different color of container walls, construction, door ...). Special anticorrosive surface treatment (for long-term sea-water environment as seaport ...)

Pass lane optional accessories

Roller gate

Mechanical roller gate (equipped by lock)
 Electrical roller gate (equipped by lock)
 Unlocking mechanism for electrical gate
 Storage for bar tool to use unlocking mechanism for electrical gate
 Non-slip flooring (Grabiol)
 Entry hinged platform
 ENTRY/EXIT symbols on roof

Passage features

Guard House optional equipment

Office equipment
 Temperature conditions
 Window view

Office swivel chair + table
 Air Conditioner with heating convertor (HV/AC)
 Exterior window (not opening, with roller shutter)
 Exterior window (1/2 slide opening, with roller shutter)
 Exterior window (full slide opening, with roller shutter)
 Roller shutter for internal window

Turnstile accessories

BAR BA turnstile only
 Remote control

Other features

Emergency drop arm, Climbing over/Crawling under detection
 Touch Panel (for remote control)
 TMON software application (for remote control via PC)
 FAIL-SAFE motor drive unit
 Back-up accumulator
 Traffic light

Car Gate system additional accessories

Barrier beam features

Other features

Beam skirt kit / Beam lightning kit
 Special small gate in container construction for easy barrier beam transport
 Back-up accumulator
 Heating module system with thermostat
 Control button or remote control

Other optional accessories

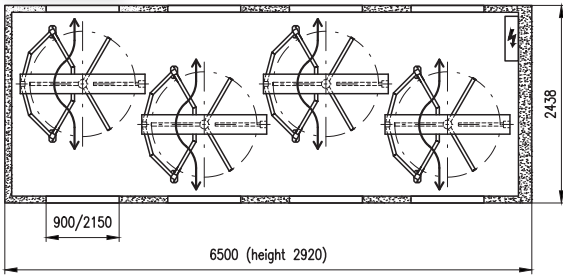
Other features

External lightning
 Forklift pockets (for transport by forklift) - only for container unit length up to 6,5m

LAYOUT DRAWINGS

4R

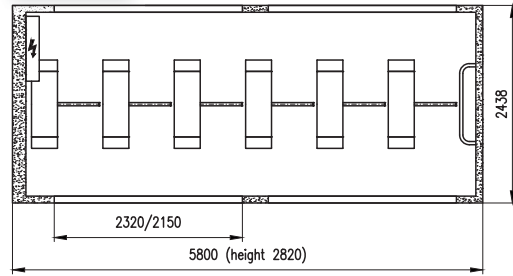
Secure Side



Non-Secure Side

6B

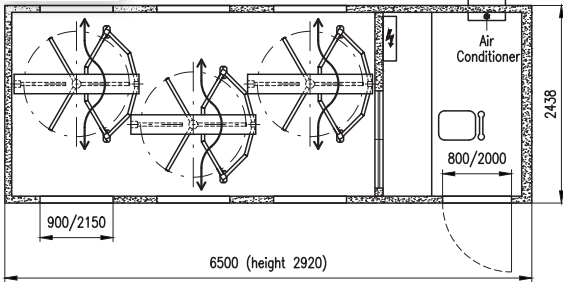
Secure Side



Non-Secure Side

3R-GH

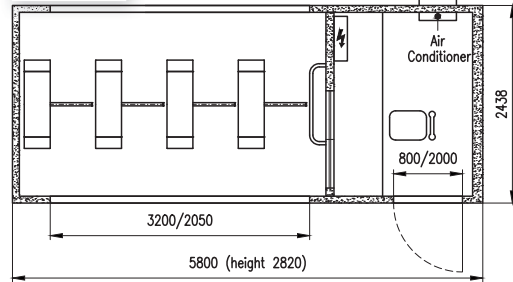
Secure Side



Non-Secure Side

4B-GH

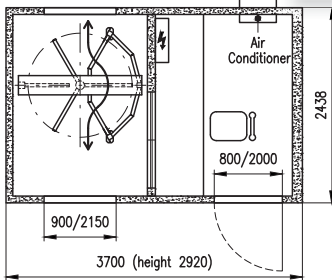
Secure Side



Non-Secure Side

1R-GH

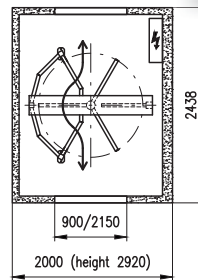
Secure Side



Non-Secure Side

1R

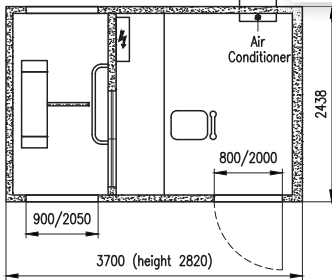
Secure Side



Non-Secure Side

1B-GH

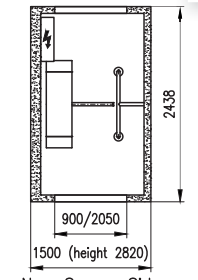
Secure Side



Non-Secure Side

1B

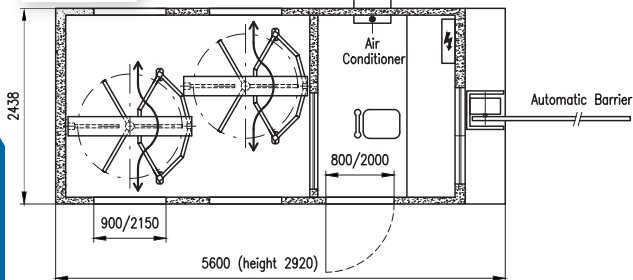
Secure Side



Non-Secure Side

2R-CG4

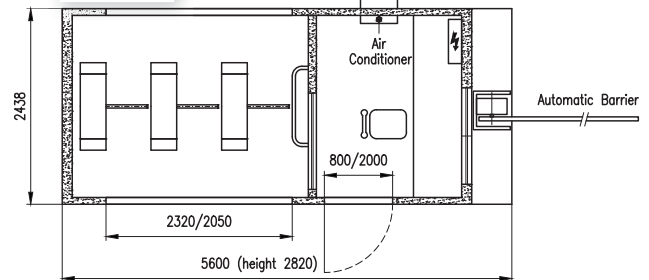
Secure Side



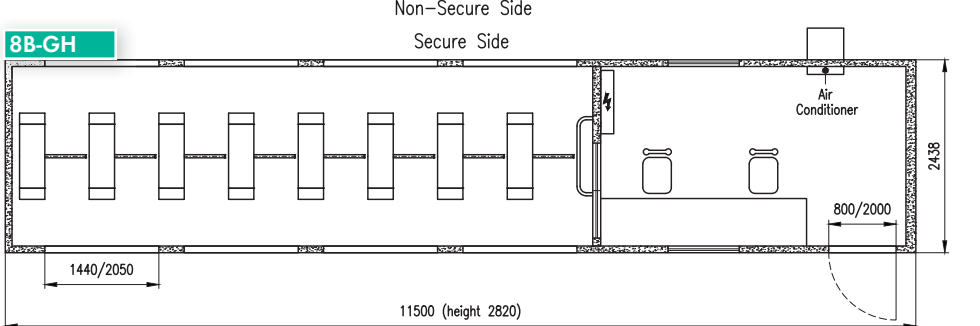
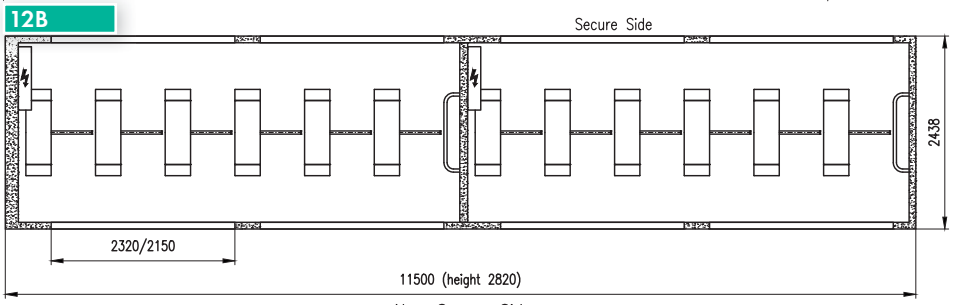
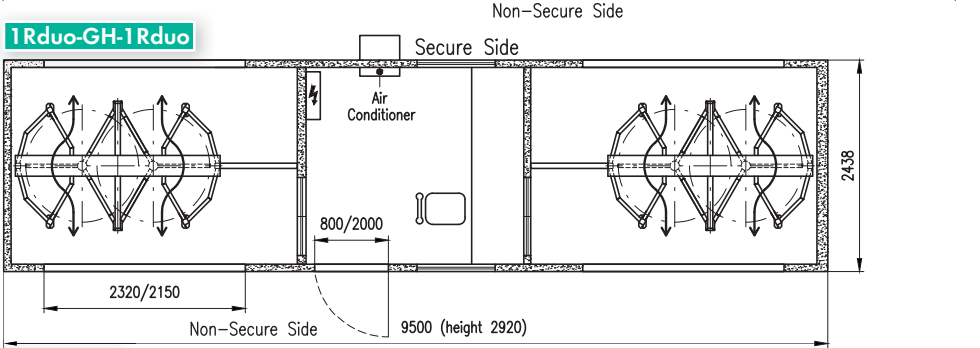
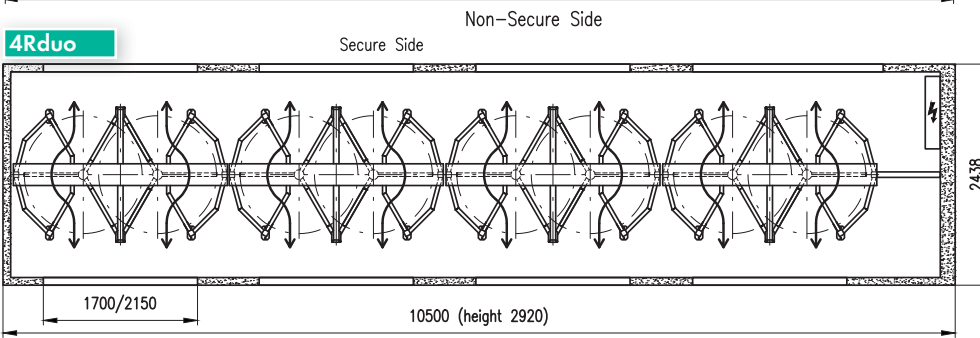
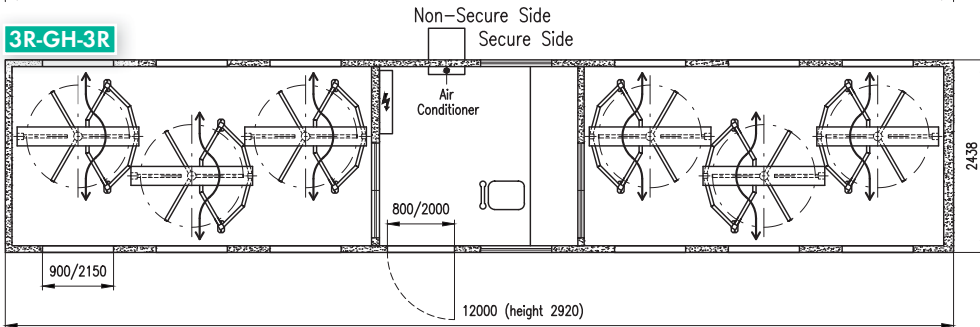
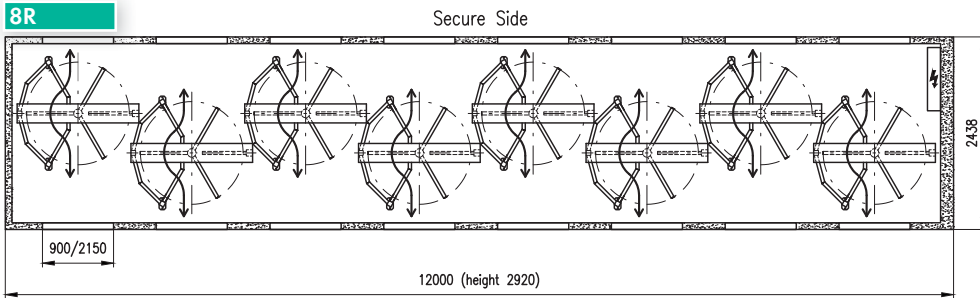
Non-Secure Side

3B-CG4

Secure Side



Non-Secure Side



COMINFO INC.

Nabrezi 695
760 01, Zlin - Prstne
Czech Republic

tel.: +420 603 151 333

fax: +420 570 570 400 (fax machine only)

cominfo@cominfo.cz

www.cominfo.eu

www.portable-turnstile-access.com

www.turnstiles-cominfo.com

www.turnstile-cominfo.com



Certificates of turnstile



Certificates of container unit